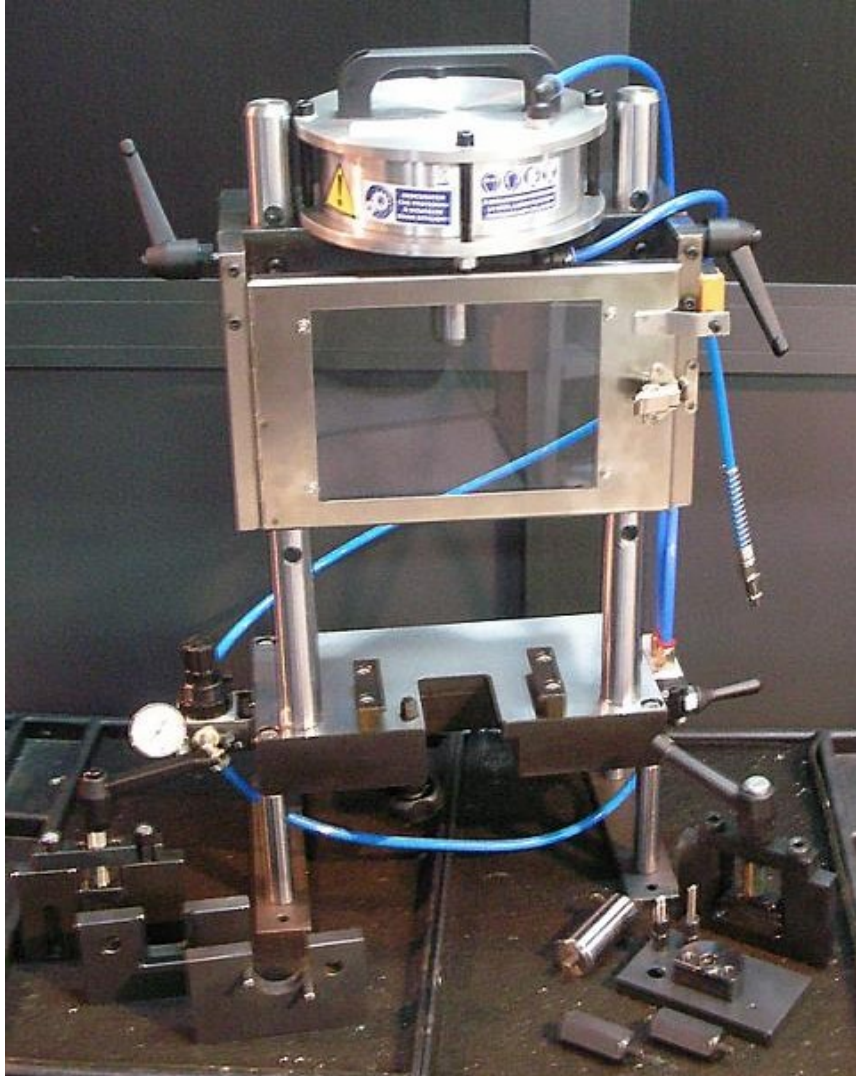
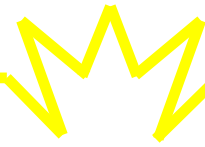


**INSTRUMENT TO ASSEMBLE/DISASSEMBLE PUMP-INJECTOR,
COMMON-RAIL INJECTOR, AND 2^N GENERATION SOLENOID SHIM AND WASHER DRIVER**

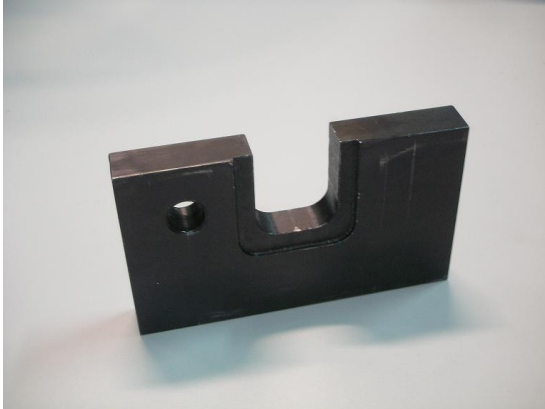


P.N.: P100

The pneumatic actuator is ideally suited to assemble and disassemble Common-Rail injector and Pump-Injector. It helps retain granes from breaking up while disassembling and favours a correct lineup of the force along the shaft when assembling; following this further, it enables any worn surface subject to high pressure supply to keep its seal so to achieve better functioning results along the test. Indeed the shim that is built in the solenoid of 2nd generation Bosch Common-Rail injector may be properly assembled and disassembled by a force that is supplied to pull/ drive the washer and the calibration shim; this way the lift servo valve is properly regulated, yet the solenoid sensitivity amount = IMA start is not affected. The force is administered by the air pressure regulator which acts over the capacity pneumatic actuator (8 Bar= 1700 Kg= 17000 Nm) and it permits to set the desired force (N= Newton) while keep away from force measurements or interpolator systems.

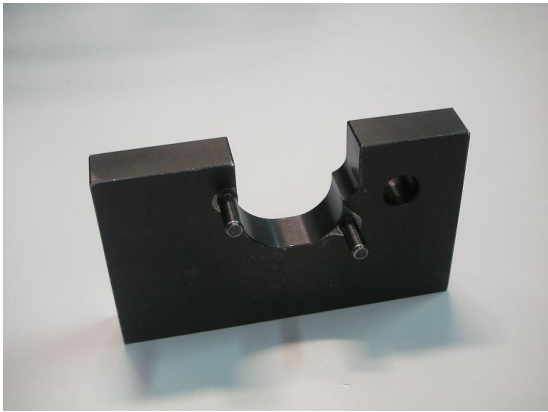


ACCESSORIES ON SUPPLY:



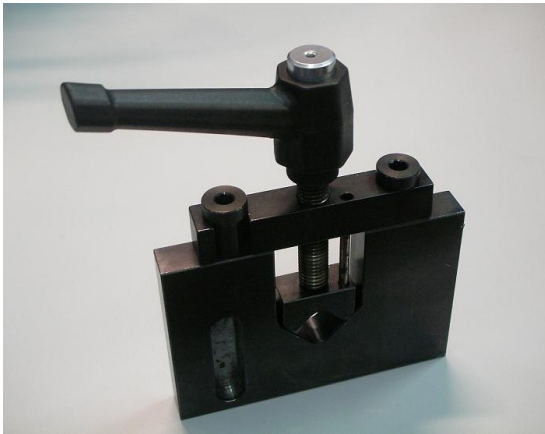
Support for Pump-Injector

P.N.: P101



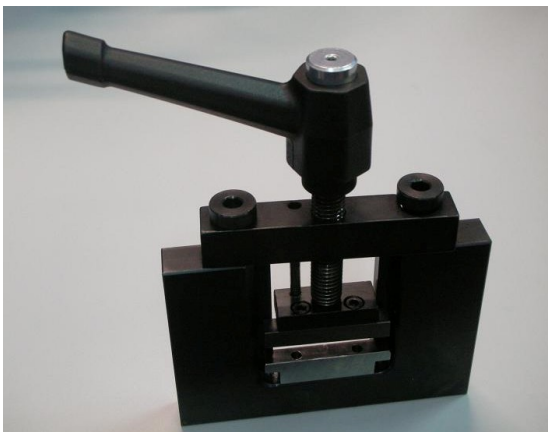
2nd generation PDE80 and PPD Siemens Pump-Injector holder

P.N.: P102



Common-Rail injector holder

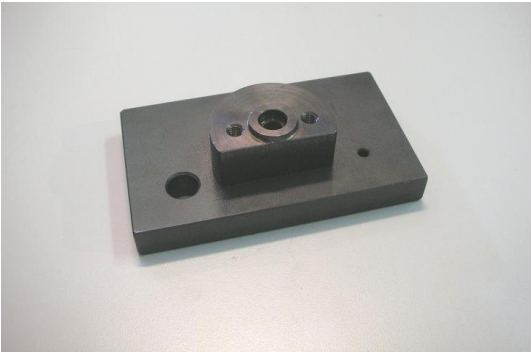
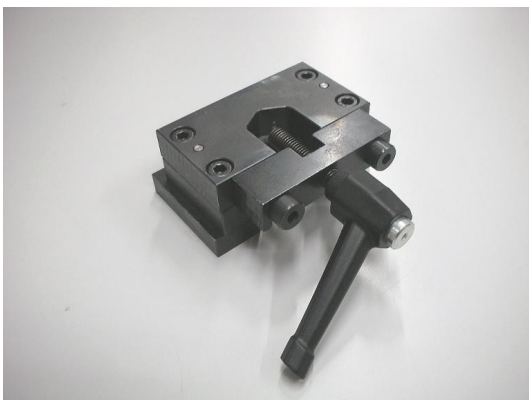
P.N.: P103



Common-Rail big injector holder

P.N.: P104

ACCESSORIES ON SUPPLY:**Nozzle Feeler "P" size type*****P.N: P105*****Nozzle Feeler "S" size type*****P.N: P106*****Solenoid washer driver*****P.N: P107*****Solenoid washer puller*****P.N: P108***

ACCESSORIES ON SUPPLY:**Common-Rail Injector solenoid hold support*****P.N.: P100-1*****Puller-driver connector*****P.N.: P100-2*****UPON REQUEST:****Hold support for 1st generation Pump-Injector PDE80 type*****P.N.: P100-3***