

CORONA



DIESEL

ANALYZER AND ULTRASONIC CLEANER FOR PETROL - GPL – GAS INJECTOR



P.N.: **CD103T**

Technical information:

- 120 cm³ 6 burettes and automated outlet discharge to read delivery;
- Nr.1 fuel pump 5 litres/minute with 6,4 Bar maximum pressure;
- Injector piloting system, 0 through 20 ms with 0,1 ms step;
- Stroke counter, 0 through 9950 with 50 strokes step;



Injector analyzer:

The instrument tests:

- 1) Multipoint electric petrol injector such as Bosch, Nippondenso, Siemens, Delphi, Jecs, Nikki, Rochester, Bendix, GM, Marelli, Weber with internal resistance within 3 to 12 Ω ;
- 2) Monopoint electric petrol injector of any trademark;
- 3) K-Jetronic mechanic iniector;
- 4) Gas BRC – Landi Renzo injector by means of two supplied supports;

The instrument is equipped with a rate table for examining and comparing delivery values with reliable data.

Ultrasonic cleaner:

The ultrasonic injector cleaner has a 25 KHz – 100W frequency which is ideal to clean accurately petrol and gas injector, diesel injector nozzle and small parts whose frequency must be introduced correctly.

The cleaning liquid **P.N.CD44** is ideal to ensure maximum efficiency.

CORONA



DIESEL

SUPPLIED ITEMS:

- *Connections and connectors in petrol injectors*



- *Connections and connectors in Gas – Gpl injectors*



*Gas injector single support
type Landi Renzo
P.N.: **CD103U-LAN***

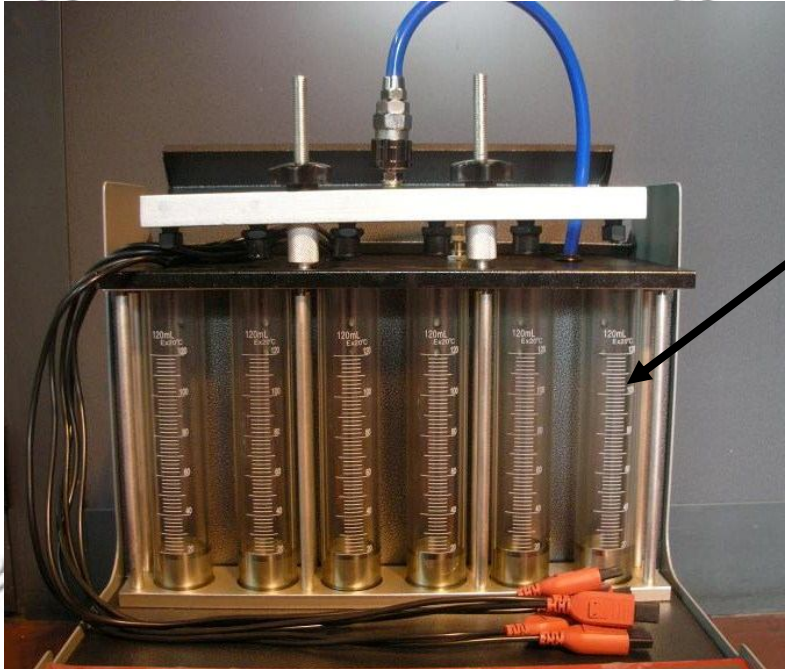


*Gas injector single support
type BRC
P.N.: **CD103U-BRC***

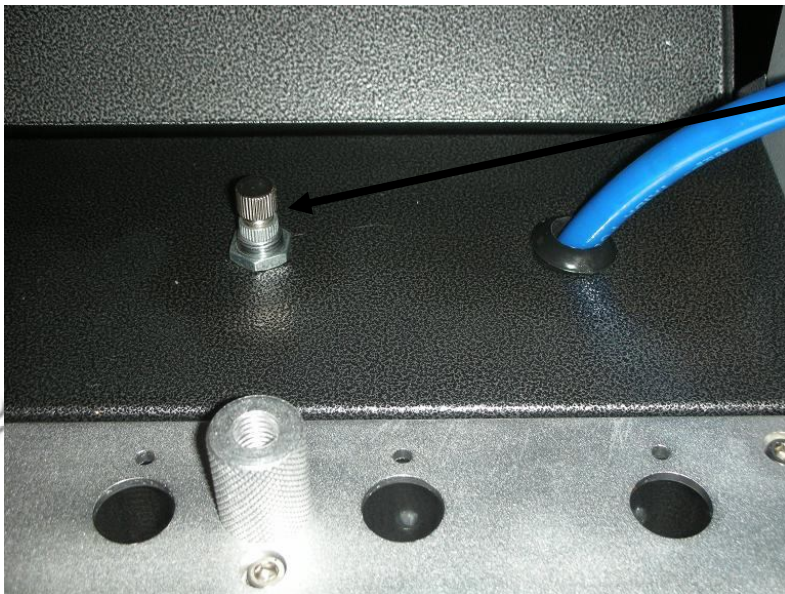
CORONA



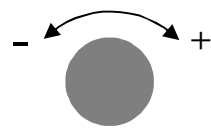
DIESEL



120 cm³ graduated burettes and automatic outlet discharge



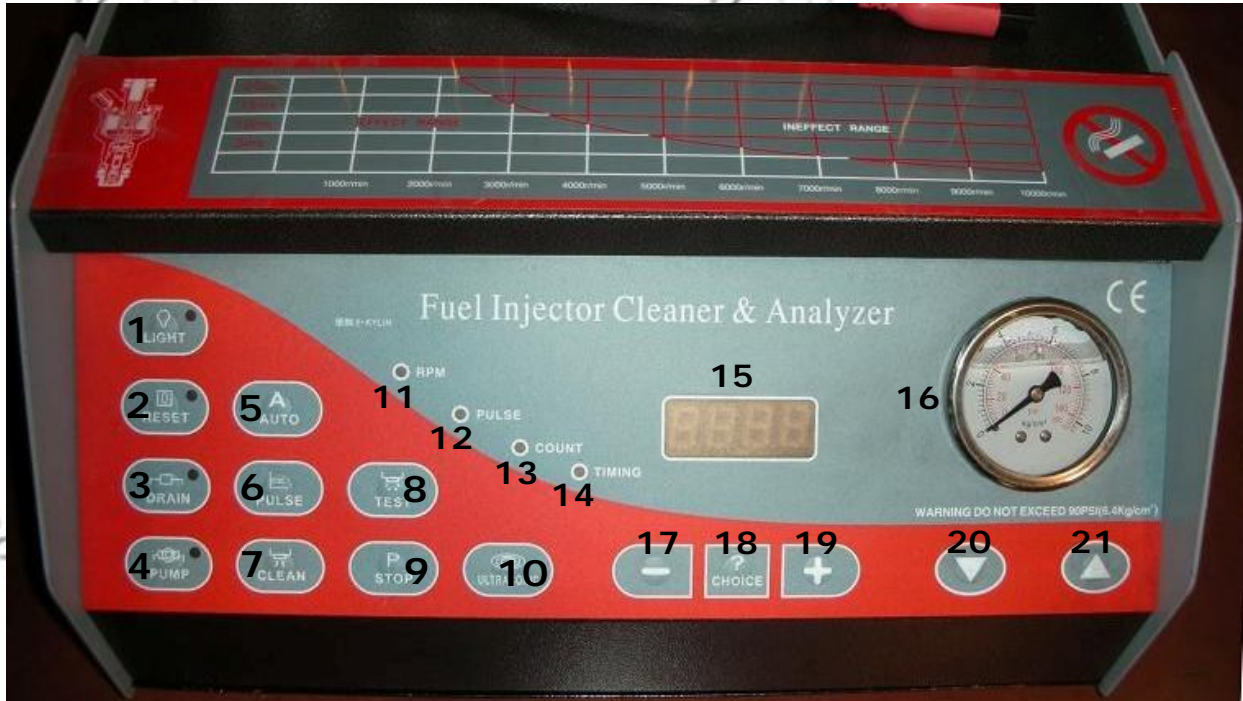
Manual pressure regulator



CORONA

DIESEL

OPERATING BUTTONS:



1. "LIGHT": Burettes lighting;
2. "RESET": Display reset;
3. "DRAIN": Burettes automatic discharge;
4. "PUMP": Pump turn on-off;
5. "AUTO": Automatic Test (RPM=650 / PULSE=3.00 / COUNT= 2000);
Note: Test values are set and it is not possible to change them
6. "PULSE": Signal pulse (RPM=650 / PULSE=3.00 may be adjusted by buttons 17-19);
7. "CLEAN": Iniector cleaning;
8. "TEST": Manual Test;
9. "STOP": Test stop;
10. "ULTRASONIC": Quick Test ;
11. "RPM": RPM are displayed where led is on;
12. "PULSE": Signal pulse is displayed where led is on;
13. "COUNT": Strokes are displayed where led is on;
14. "TIMING": Test time is displayed where led is on;
15. Functions display;
16. Pressure manometre;
17. "-": Manual values decrease;
18. "CHOICE": RPM-PULSE-COUNT-TIMING selection;
19. "+": Manual values increase;
20. "▼": Pressure decrease;
21. "▲": Pressure increase;

CORONA



DIESEL



The ultrasonic injector cleaner has a 25 KHz – 100W frequency which is ideal to clean accurately petrol and gas injector, diesel injector nozzle and small parts whose frequency must be introduced correctly.

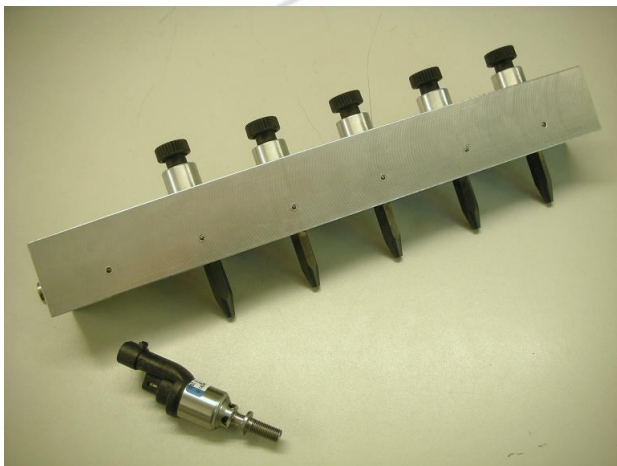
The cleaning liquid **P.N.CD44** is ideal to ensure maximum efficiency.

MANUAL FUNCTIONS:

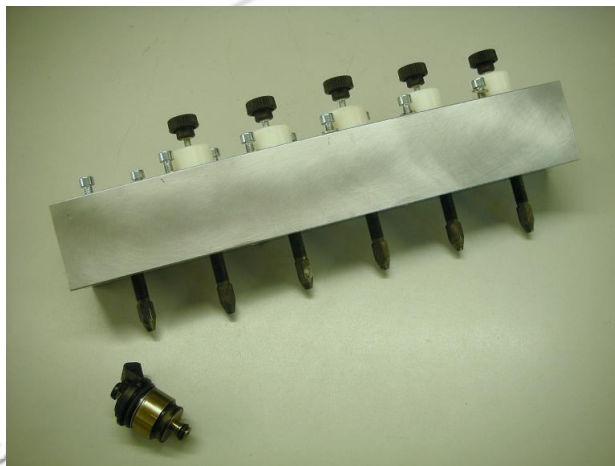
- 1) Press button 18 (CHOICE) to operate "RPM" (nr.11);
- 2) Set RPM (equivalent led must be lighted), increase or decrease through buttons 17-19;
- 3) Press button 18 (CHOICE) to move to "PULSE" (nr.12);
- 4) Set the pulse (equivalent led must be lighted), increase or decrease through buttons 17-19;
- 5) Press 18 (CHOICE) to move to "COUNT" (nr.13);
- 6) Set strokes (equivalent led must be lighted), increase or decrease through buttons 17-19;
- 7) Press "TEST" (nr.8) to start;
- 8) Adjust pressure through buttons 20-21



Articles on request:



Gas injector support type BRC



Gas injector support type Landi Renzo